

ACI Racing Weekend Imola, 7-8 Maggio 2022

TCR Italy - Classifica Qualifiche

Imola Circuit 4.909 m

1 / 2

Num.	Conduttore	Naz	Concorrente	Team	Auto	Classe	Tempo	Dist.	Rel.	Giri
1	27 RUBEN Volt	EST	ALM Motorsport	ALM Motorsport	Honda Civic FK7 H70	TCR	1'52.353			11
2	22 LANGEVELD Niels	NED	Target	Target	Hyundai Elantra TCR	TCR	1'52.546	0.193	0.193	11
3	33 TAMBURINI Carlo	ITA	Tamburini Carlo	MM Motorsport	Honda Civic FK7 H70	TCR	1'52.573	0.220	0.027	10
4	8 BABUIN Denis	ITA	Babuini Denis		Audi RS3 LMS TCR	TCR	1'52.922	0.569	0.349	11
5	5 BISSA Manuel	ITA	Bissa Manuel	MM Motorsport	Honda Civic FK7 H70	TCR	1'52.949	0.596	0.027	10
6	6 GIACON Jonathan	ITA	Giacon Jonathan		Fiat Tipo	TCR	1'53.016	0.663	0.067	11
7	44 IMBERTI Michele	ITA	Imberti Michele		Hyundai i30 N TCR	TCR	1'53.017	0.664	0.001	11
8	12 FERNÁNDEZ Gil Rubén	ESP	Auto Club RC2 Valles	Auto Club RC2 Valles	Audi RS3 LMS TCR	TCR	1'53.026	0.673	0.009	9
9	39 ANTTI Rammo	EST	ALM Motorsport	ALM Motorsport	Honda Civic FK7 H70	TCR	1'53.147	0.794	0.121	11
10	19 FERNÁNDEZ Gil Felipe	ESP	Auto Club RC2 Valles	Auto Club RC2 Valles	Cupra Leon Competicion	TCR	1'53.191	0.838	0.044	9
11	4 TAVANO Salvatore	ITA	Girasole	Girasole	Cupra Leon Competicion	TCR	1'53.273	0.920	0.082	10
12	23 VAHTEL Mattias	EST	ALM Motorsport	ALM Motorsport	Honda Civic FK7 H70	TCR	1'53.333	0.980	0.060	10
13	37 LOPÉZ BOLOTIN Sergio	VEN	Auto Club RC2 Valles	Auto Club RC2 Valles	Cupra Leon Competicion	TCR	1'53.796	1.443	0.463	10
14	77 PUSSIER Sylvain	FRA	Pussier Sylvain	SP Competicion	Cupra Leon Competicion	TCR	1'53.938	1.585	0.142	11
15	61 GHERMANDI Giacomo	ITA	Lema Racing		Cupra Leon Competicion	TCR	1'53.948	1.595	0.010	11
16	46 BUTTI Marco	ITA	D-Max Swisse		Hyundai i30 N TCR	TCR	1'53.966	1.613	0.018	10
17	14 IANNOTTA Marco	ITA	Iannotta Marco	MM Motorsport	Honda Civic FK7 H70	TCR	1'54.267	1.914	0.301	9
18	24 LORENZINI Luca	ITA	Aggressive Team	Aggressive Team Italia	Hyundai Elantra TCR	TCR	1'54.298	1.945	0.031	10
19	21 GUIDA Nicola	ITA	Guida Nicola	Girasole	Cupra Leon Competicion	TCR	1'54.423	2.070	0.125	11
20	20 RAFFAELE Francesca	ITA	Target		Hyundai i30 N TCR	TCR	1'54.714	2.361	0.291	11
21	66 COLOMBANI Gilles	FRA	Colombani Gilles	Team Clairret	Cupra Leon Competicion	TCR	1'54.978	2.625	0.264	11
22	11 REDUZZI Damiano	ITA	Reduzzi Damiano	Trico WRT	Hyundai i30 N TCR	TCR	1'54.994	2.641	0.016	10
23	47 CARMINATI Ettore	ITA	Carminati Ettore		Hyundai i30 N TCR	TCR	1'55.029	2.676	0.035	10
24	3 GURRIERI Raffaele	ITA	Girasole	Girasole	Cupra Leon Competicion	TCR	1'55.087	2.734	0.058	11
25	81 DI MARE Sabatino	ITA	Di Mare Sabatino	Sc. Vesuvio	Cupra TCR DSG	TCDS	1'55.198	2.845	0.111	10
26	18 VENTAJA Stéphane	FRA	Ventaja Stéphane	Team Clairret	Audi RS3 LMS TCR	TCR	1'55.521	3.168	0.323	11
27	56 BRUSA Cesare	ITA	Target	Target	Hyundai i30 N TCR	TCR	1'55.790	3.437	0.269	10
28	96 GIACON Steven	ITA	Giacon Steven		Audi TCR DSG	TCDS	1'56.292	3.939	0.502	10
29	74 CAPPELLO Edo	ITA	Capello Edo	Aggressive Team Italia	Hyundai i30 N TCR	TCR	1'56.421	4.068	0.129	9
30	90 TRENTIN Mauro	ITA	Trentin Mauro		Audi TCR DSG	TCDS	1'56.640	4.287	0.219	10
31	13 ROMANI Emanuele	ITA	Romani Emanuele		Hyundai i30 N TCR	TCR	1'58.056	5.703	1.416	10
32	85 MASSARO Rodolfo	ITA	Massaro Rodolfo		Audi TCR DSG	TCDS				6

 Tempo di Qualificazione: (117% di 1'52.491): **2'11.615**

Umidità	88%	ARIA	16°C
Condizioni	WET	Pista	17°C

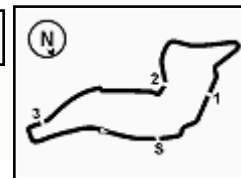
Direttore di Gara : Massimiliano Ghinassi

Direttore di Prova : Gianluca Marotta

	Inizio	Fine
07/05/2022	11:08	11:36

Esposta alle:




ACI Racing Weekend Imola, 7-8 Maggio 2022
TCR Italy - Classifica Qualifiche
Penalty and Infringement

10.58			Time to Pit Lane Open:
11.17	5	M. BISSA	Lap Cancelled (1'55.669) - Exceeded Track Limits - Turn 13
11.18	44	M. IMBERTI	Lap Cancelled (1'55.950) - Exceeded Track Limits - Turn 13
11.20	6	J. GIACON	Lap Cancelled (1'54.887) - Exceeded Track Limits - Turn 13
11.21	96	S. GIACON	Lap Cancelled (1'58.936) - Exceeded Track Limits - Turn 13
11.23	37	S. LOPÉZ BOLOTIN	Lap Cancelled (1'55.210) - Exceeded Track Limits - Turn 9
11.24	44	M. IMBERTI	Lap Cancelled (1'54.153) - Exceeded Track Limits - Turn 14
11.24	23	M. VAHTEL	Lap Cancelled (1'53.268) - Exceeded Track Limits - Turn 13
11.27	85	R. MASSARO	ALL TIME DELETED
11.30	39	R. ANTTI	Lap Cancelled (1'53.946) - Exceeded Track Limits - Turn 13
11.31	5	M. BISSA	Lap Cancelled (1'57.143) - Exceeded Track Limits - Turn 13
11.32	18	S. VENTAJA	Lap Cancelled (1'55.576) - Exceeded Track Limits - Turn 13

Fastest Laps Sequence

Num.	Concorrente	Naz	Team	Auto	Local Time	Tempo	Dist.	Media
61	G. GHERMANDI	ITA		Cupra Leon Competicion	11:13'40.520	2'00.062		147,194
5	M. BISSA	ITA	MM Motorsport	Honda Civic FK7 H70	11:13'43.951	1'59.315	-0.747	148,115
27	V. RUBEN	EST	ALM Motorsport	Honda Civic FK7 H70	11:13'52.483	1'57.434	-1.881	150,488
61	G. GHERMANDI	ITA		Cupra Leon Competicion	11:15'37.374	1'56.854	-0.580	151,235
5	M. BISSA	ITA	MM Motorsport	Honda Civic FK7 H70	11:15'40.273	1'56.322	-0.532	151,927
27	V. RUBEN	EST	ALM Motorsport	Honda Civic FK7 H70	11:15'47.622	1'55.139	-1.183	153,488
27	V. RUBEN	EST	ALM Motorsport	Honda Civic FK7 H70	11:17'41.755	1'54.133	-1.006	154,840
23	M. VAHTEL	EST	ALM Motorsport	Honda Civic FK7 H70	11:17'53.663	1'53.914	-0.219	155,138
27	V. RUBEN	EST	ALM Motorsport	Honda Civic FK7 H70	11:19'35.344	1'53.589	-0.325	155,582
23	M. VAHTEL	EST	ALM Motorsport	Honda Civic FK7 H70	11:19'47.101	1'53.438	-0.151	155,789
27	V. RUBEN	EST	ALM Motorsport	Honda Civic FK7 H70	11:21'28.116	1'52.772	-0.666	156,709
33	C. TAMBURINI	ITA	MM Motorsport	Honda Civic FK7 H70	11:25'23.562	1'52.573	-0.199	156,986
27	V. RUBEN	EST	ALM Motorsport	Honda Civic FK7 H70	11:32'52.987	1'52.353	-0.220	157,294

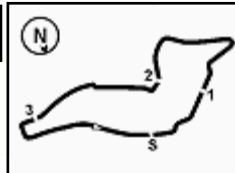
Direttore di Gara : Massimiliano Ghinassi

Direttore di Prova : Gianluca Marotta

	Inizio	Fine
07/05/2022	11:08	11:36

Esposta alle:





Imola Circuit 4.909 m

ACI Racing Weekend Imola, 7-8 Maggio 2022
TCR Italy - Best Sectors & Speed Qualifiche
MIGLIOR GIRO

1	27 RUBEN Volt	Honda Civic FK7 H70	1'52.353
2	22 LANGEVELD Niels	Hvundai Elantra TCR	1'52.546
3	33 TAMBURINI Carlo	Honda Civic FK7 H70	1'52.573
4	8 BABUIN Denis	Audi RS3 LMS TCR	1'52.922
5	5 BISSA Manuel	Honda Civic FK7 H70	1'52.949
6	6 GIACON Jonathan	Fiat Tipo	1'53.016
7	44 IMBERTI Michele	Hvundai i30 N TCR	1'53.017
8	12 FERNÁNDEZ Gil Rubén	Audi RS3 LMS TCR	1'53.026
9	39 ANTTI Rammo	Honda Civic FK7 H70	1'53.147
10	19 FERNÁNDEZ Gil Felipe	Cupra Leon Competicion	1'53.191
11	4 TAVANO Salvatore	Cupra Leon Competicion	1'53.273
12	23 VAHTEL Mattias	Honda Civic FK7 H70	1'53.333
13	37 LOPÉZ BOLOTIN Sergio	Cupra Leon Competicion	1'53.796
14	77 PUSSIER Sylvain	Cupra Leon Competicion	1'53.938
15	61 GHERMANDI Giacomo	Cupra Leon Competicion	1'53.948
16	46 BUTTI Marco	Hvundai i30 N TCR	1'53.966
17	14 IANNOTTA Marco	Honda Civic FK7 H70	1'54.267
18	24 LORENZINI Luca	Hvundai Elantra TCR	1'54.298
19	21 GUIDA Nicola	Cupra Leon Competicion	1'54.423
20	20 RAFFAELE Francesca	Hvundai i30 N TCR	1'54.714
21	66 COLOMBANI Gilles	Cupra Leon Competicion	1'54.978
22	11 REDUZZI Damiano	Hvundai i30 N TCR	1'54.994
23	47 CARMINATI Ettore	Hvundai i30 N TCR	1'55.029
24	3 GURRIERI Raffaele	Cupra Leon Competicion	1'55.087
25	81 DI MARE Sabatino	Cupra TCR DSG	1'55.198
26	18 VENTAJA Stéphane	Audi RS3 LMS TCR	1'55.521
27	56 BRUSA Cesare	Hvundai i30 N TCR	1'55.790
28	96 GIACON Steven	Audi TCR DSG	1'56.292
29	74 CAPPELLO Edo	Hvundai i30 N TCR	1'56.421
30	90 TRENTIN Mauro	Audi TCR DSG	1'56.640
31	13 ROMANI Emanuele	Hvundai i30 N TCR	1'58.056
32	85 MASSARO Rodolfo	Audi TCR DSG	

SPEED

1	8 BABUIN Denis	Audi RS3 LMS TCR	246,0
2	6 GIACON Jonathan	Fiat Tipo	244,9
3	12 FERNÁNDEZ Gil Rubén	Audi RS3 LMS TCR	244,3
4	19 FERNÁNDEZ Gil Felipe	Cupra Leon Competicion	243,2
5	4 TAVANO Salvatore	Cupra Leon Competicion	242,2
6	77 PUSSIER Sylvain	Cupra Leon Competicion	241,6
7	66 COLOMBANI Gilles	Cupra Leon Competicion	241,6
8	21 GUIDA Nicola	Cupra Leon Competicion	241,1
9	37 LOPÉZ BOLOTIN Sergio	Cupra Leon Competicion	241,1
10	96 GIACON Steven	Audi TCR DSG	240,5
11	3 GURRIERI Raffaele	Cupra Leon Competicion	240,5
12	22 LANGEVELD Niels	Hyundai Elantra TCR	240,5
13	24 LORENZINI Luca	Hyundai Elantra TCR	240,0
14	39 ANTTI Rammo	Honda Civic FK7 H70	240,0
15	27 RUBEN Volt	Honda Civic FK7 H70	239,5
16	33 TAMBURINI Carlo	Honda Civic FK7 H70	239,5
17	5 BISSA Manuel	Honda Civic FK7 H70	238,9
18	47 CARMINATI Ettore	Hyundai i30 N TCR	238,4
19	14 IANNOTTA Marco	Honda Civic FK7 H70	238,4
20	81 DI MARE Sabatino	Cupra TCR DSG	238,4
21	23 VAHTEL Mattias	Honda Civic FK7 H70	237,9
22	44 IMBERTI Michele	Hyundai i30 N TCR	237,9
23	20 RAFFAELE Francesca	Hyundai i30 N TCR	237,4
24	18 VENTAJA Stéphane	Audi RS3 LMS TCR	237,4
25	46 BUTTI Marco	Hyundai i30 N TCR	237,4
26	11 REDUZZI Damiano	Hyundai i30 N TCR	237,4
27	61 GHERMANDI Giacomo	Cupra Leon Competicion	237,4
28	85 MASSARO Rodolfo	Audi TCR DSG	236,3
29	74 CAPPELLO Edo	Hyundai i30 N TCR	234,3
30	56 BRUSA Cesare	Hyundai i30 N TCR	233,8
31	13 ROMANI Emanuele	Hyundai i30 N TCR	233,3
32	90 TRENTIN Mauro	Audi TCR DSG	231,8

SEG. 1

1	27 RUBEN Volt	23.427
2	33 TAMBURINI Carlo	23.433
3	5 BISSA Manuel	23.546
4	23 VAHTEL Mattias	23.554
5	12 FERNÁNDEZ Gil Rubén	23.576
6	6 GIACON Jonathan	23.599
7	8 BABUIN Denis	23.604
8	39 ANTTI Rammo	23.657
9	22 LANGEVELD Niels	23.672
10	37 LOPÉZ BOLOTIN Sergio	23.706
11	77 PUSSIER Sylvain	23.713
12	4 TAVANO Salvatore	23.788
13	66 COLOMBANI Gilles	23.846
14	24 LORENZINI Luca	23.850
15	44 IMBERTI Michele	23.894
16	14 IANNOTTA Marco	23.910
17	19 FERNÁNDEZ Gil Felipe	23.913
18	61 GHERMANDI Giacomo	23.924
19	81 DI MARE Sabatino	23.955
20	46 BUTTI Marco	23.988
21	20 RAFFAELE Francesca	24.042
22	21 GUIDA Nicola	24.066
23	3 GURRIERI Raffaele	24.129
24	96 GIACON Steven	24.196
25	47 CARMINATI Ettore	24.236
26	56 BRUSA Cesare	24.249
27	74 CAPPELLO Edo	24.271
28	18 VENTAJA Stéphane	24.305
29	11 REDUZZI Damiano	24.380
30	90 TRENTIN Mauro	24.380
31	85 MASSARO Rodolfo	24.399
32	13 ROMANI Emanuele	24.814

SEG. 2

1	22 LANGEVELD Niels	36.719
2	27 RUBEN Volt	36.781
3	33 TAMBURINI Carlo	36.840
4	19 FERNÁNDEZ Gil Felipe	36.935
5	12 FERNÁNDEZ Gil Rubén	36.962
6	23 VAHTEL Mattias	36.979
7	44 IMBERTI Michele	36.997
8	6 GIACON Jonathan	37.079
9	24 LORENZINI Luca	37.089
10	8 BABUIN Denis	37.175
11	4 TAVANO Salvatore	37.244
12	46 BUTTI Marco	37.256
13	39 ANTTI Rammo	37.286
14	61 GHERMANDI Giacomo	37.347
15	5 BISSA Manuel	37.350
16	77 PUSSIER Sylvain	37.351
17	37 LOPÉZ BOLOTIN Sergio	37.358
18	14 IANNOTTA Marco	37.361
19	11 REDUZZI Damiano	37.728
20	81 DI MARE Sabatino	37.790
21	20 RAFFAELE Francesca	37.795
22	47 CARMINATI Ettore	37.808
23	3 GURRIERI Raffaele	37.892
24	21 GUIDA Nicola	37.937
25	56 BRUSA Cesare	37.949
26	74 CAPPELLO Edo	38.009
27	66 COLOMBANI Gilles	38.060
28	96 GIACON Steven	38.174
29	18 VENTAJA Stéphane	38.236
30	85 MASSARO Rodolfo	38.368
31	90 TRENTIN Mauro	38.370
32	13 ROMANI Emanuele	39.038

SEG. 3

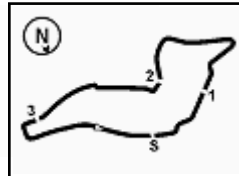
1	27 RUBEN Volt	31.904
2	4 TAVANO Salvatore	32.058
3	22 LANGEVELD Niels	32.066
4	44 IMBERTI Michele	32.068
5	33 TAMBURINI Carlo	32.097
6	39 ANTTI Rammo	32.134
7	8 BABUIN Denis	32.146
8	21 GUIDA Nicola	32.146
9	61 GHERMANDI Giacomo	32.170
10	46 BUTTI Marco	32.194
11	6 GIACON Jonathan	32.198
12	12 FERNÁNDEZ Gil Rubén	32.220
13	19 FERNÁNDEZ Gil Felipe	32.256
14	3 GURRIERI Raffaele	32.323
15	23 VAHTEL Mattias	32.384
16	5 BISSA Manuel	32.405
17	18 VENTAJA Stéphane	32.451
18	14 IANNOTTA Marco	32.492
19	20 RAFFAELE Francesca	32.527
20	77 PUSSIER Sylvain	32.537
21	24 LORENZINI Luca	32.591
22	37 LOPÉZ BOLOTIN Sergio	32.593
23	11 REDUZZI Damiano	32.594
24	66 COLOMBANI Gilles	32.610
25	47 CARMINATI Ettore	32.628
26	56 BRUSA Cesare	32.740
27	74 CAPPELLO Edo	32.942
28	81 DI MARE Sabatino	32.975
29	85 MASSARO Rodolfo	33.065
30	90 TRENTIN Mauro	33.116
31	96 GIACON Steven	33.319
32	13 ROMANI Emanuele	33.539

SEG. 4

1	8 BABUIN Denis	19.829
2	33 TAMBURINI Carlo	19.946
3	12 FERNÁNDEZ Gil Rubén	19.959
4	44 IMBERTI Michele	19.963
5	6 GIACON Jonathan	19.971
6	27 RUBEN Volt	19.977
7	5 BISSA Manuel	19.980
8	22 LANGEVELD Niels	19.986
9	46 BUTTI Marco	20.032
10	39 ANTTI Rammo	20.054
11	4 TAVANO Salvatore	20.077
12	19 FERNÁNDEZ Gil Felipe	20.087
13	11 REDUZZI Damiano	20.101
14	23 VAHTEL Mattias	20.119
15	37 LOPÉZ BOLOTIN Sergio	20.119
16	61 GHERMANDI Giacomo	20.125
17	20 RAFFAELE Francesca	20.141
18	24 LORENZINI Luca	20.166
19	21 GUIDA Nicola	20.274
20	18 VENTAJA Stéphane	20.276
21	77 PUSSIER Sylvain	20.279
22	14 IANNOTTA Marco	20.344
23	81 DI MARE Sabatino	20.357
24	47 CARMINATI Ettore	20.357
25	3 GURRIERI Raffaele	20.389
26	96 GIACON Steven	20.395
27	66 COLOMBANI Gilles	20.461
28	74 CAPPELLO Edo	20.467
29	90 TRENTIN Mauro	20.487
30	56 BRUSA Cesare	20.517
31	13 ROMANI Emanuele	20.614

07/05/2022





ACI Racing Weekend Imola, 7-8 Maggio 2022

TCR Italy - Ideal Time Qualifiche

 Imola Circuit 4.909 m
1 / 2

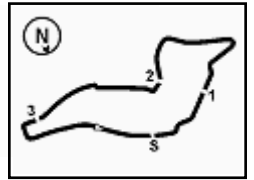
Num. Conducente	Auto	Seg. 1	Seg. 2	Seg. 3	Seg. 4	Ideal Time			
		Diff. 1	Diff. 2	Diff. 3	Diff. 4	Miglior Giro	Pos.	Diff.	
1	27 RUBEN V. (EST)	Honda Civic FK7 H70	23.427 +0.264	36.781	31.904	19.977	1'52.089 1'52.353	1	0.264
2	33 TAMBURINI C. (ITA)	Honda Civic FK7 H70	23.433	36.840 +0.069	32.097	19.946 +0.188	1'52.316 1'52.573	3	0.257
3	22 LANGEVELD N. (NED)	Hyundai Elantra TCR	23.672 +0.103	36.719	32.066	19.986	1'52.443 1'52.546	2	0.103
4	12 FERNÁNDEZ G. (ESP)	Audi RS3 LMS TCR	23.576	36.962	32.220 +0.194	19.959 +0.115	1'52.717 1'53.026	8	0.309
5	8 BABUIN D. (ITA)	Audi RS3 LMS TCR	23.604 +0.036	37.175	32.146 +0.132	19.829	1'52.754 1'52.922	4	0.168
6	6 GIACON J. (ITA)	Fiat Tipo	23.599	37.079	32.198 +0.169	19.971	1'52.847 1'53.016	6	0.169
7	44 IMBERTI M. (ITA)	Hyundai i30 N TCR	23.894	36.997	32.068 +0.089	19.963 +0.006	1'52.922 1'53.017	7	0.095
8	23 VAHTEL M. (EST)	Honda Civic FK7 H70	23.554 +0.056	36.979	32.384 +0.074	20.119 +0.167	1'53.036 1'53.333	12	0.297
9	39 ANTTI R. (EST)	Honda Civic FK7 H70	23.657 +0.016	37.286	32.134	20.054	1'53.131 1'53.147	9	0.016
10	4 TAVANO S. (ITA)	Cupra Leon Competicion	23.788 +0.106	37.244	32.058	20.077	1'53.167 1'53.273	11	0.106
11	19 FERNÁNDEZ G. (ESP)	Cupra Leon Competicion	23.913	36.935	32.256	20.087	1'53.191 1'53.191	10	
12	46 BUTTI M. (ITA)	Hyundai i30 N TCR	23.988 +0.168	37.256 +0.201	32.194 +0.127	20.032	1'53.470 1'53.966	16	0.496
13	61 GHERMANDI G. (ITA)	Cupra Leon Competicion	23.924 +0.117	37.347 +0.265	32.170	20.125	1'53.566 1'53.948	15	0.382
14	24 LORENZINI L. (ITA)	Hyundai Elantra TCR	23.850	37.089	32.591 +0.561	20.166 +0.041	1'53.696 1'54.298	18	0.602
15	37 LOPÉZ BOLOTIN S. (VE)	Cupra Leon Competicion	23.706	37.358	32.593 +0.020	20.119	1'53.776 1'53.796	13	0.020
16	77 PUSSIER S. (FRA)	Cupra Leon Competicion	23.713	37.351	32.537 +0.058	20.279	1'53.880 1'53.938	14	0.058
17	14 IANNOTTA M. (ITA)	Honda Civic FK7 H70	23.910	37.361	32.492 +0.142	20.344 +0.018	1'54.107 1'54.267	17	0.160
18	21 GUIDA N. (ITA)	Cupra Leon Competicion	24.066	37.937	32.146	20.274	1'54.423 1'54.423	19	
19	20 RAFFAELE F. (ITA)	Hyundai i30 N TCR	24.042	37.795 +0.061	32.527	20.141 +0.148	1'54.505 1'54.714	20	0.209
20	3 GURRIERI R. (ITA)	Cupra Leon Competicion	24.129 +0.339	37.892	32.323	20.389 +0.015	1'54.733 1'55.087	24	0.354
21	11 REDUZZI D. (ITA)	Hyundai i30 N TCR	24.380 +0.191	37.728	32.594	20.101	1'54.803 1'54.994	22	0.191
22	66 COLOMBANI G. (FRA)	Cupra Leon Competicion	23.846	38.060 +0.001	32.610	20.461	1'54.977 1'54.978	21	0.001
23	47 CARMINATI E. (ITA)	Hyundai i30 N TCR	24.236	37.808	32.628	20.357	1'55.029 1'55.029	23	
24	81 DI MARE S. (ITA)	Cupra TCR DSG	23.955	37.790	32.975 +0.121	20.357	1'55.077 1'55.198	25	0.121
25	18 VENTAJA S. (FRA)	Audi RS3 LMS TCR	24.305 +0.066	38.236	32.451 +0.187	20.276	1'55.268 1'55.521	26	0.253
26	56 BRUSA C. (ITA)	Hyundai i30 N TCR	24.249	37.949	32.740 +0.117	20.517 +0.218	1'55.455 1'55.790	27	0.335
27	74 CAPPELLO E. (ITA)	Hyundai i30 N TCR	24.271	38.009	32.942 +0.732	20.467	1'55.689 1'56.421	29	0.732
28	96 GIACON S. (ITA)	Audi TCR DSG	24.196	38.174	33.319 +1'01.906	20.395 +0.672	1'56.084 1'56.292	28	0.208
29	90 TRENTIN M. (ITA)	Audi TCR DSG	24.380	38.370	33.116 +0.142	20.487 +0.145	1'56.353 1'56.640	30	0.287
30	13 ROMANI E. (ITA)	Hyundai i30 N TCR	24.814	39.038	33.539	20.614 +0.051	1'58.005 1'58.056	31	0.051
	5 BISSA M. (ITA)	Honda Civic FK7 H70		Tratto Mancante			1'52.949		
	85 MASSARO R. (ITA)	Audi TCR DSG							
Ideal Time Assoluto			23.427	36.719	31.904	19.829	1'51.879		

07/05/2022





3.3



ACI Racing Weekend Imola, 7-8 Maggio 2022

TCR Italy - Ideal Time Qualifiche

Imola Circuit 4.909 m
2 / 2

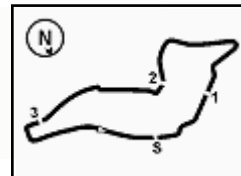
Num. Conduttore	Auto	Seg. 1 Diff. 1	Seg. 2 Diff. 2	Seg. 3 Diff. 3	Seg. 4 Diff. 4	Ideal Time Miglior Giro	Pos.	Diff.
-----------------	------	-------------------	-------------------	-------------------	-------------------	----------------------------	------	-------

07/05/2022



Powered by FICr PERUGIA TIMING





3 R. GURRIERI (1'55.087)							
Giro	Seg.1	Seg.2	Seg.3	Seg.4	T. Giro	km/h	Local Time
1							11:09'42.064
2	48.906	45.683	38.184	2'46.607	4'59.380P	158,4	11:14'41.444
3	42.124	41.970	34.915	21.493	2'20.502P	128,0	11:17'01.946
4	25.172	40.230	34.393	20.831	2'00.626	239,5	11:19'02.572
5	24.761	41.647	40.133	1'06.858	2'53.399P	240,0	11:21'55.971
6	39.048	40.341	33.785	20.860	2'14.034P	167,2	11:24'10.005
7	24.694	38.739	32.746	20.642	1'56.821	240,0	11:26'06.826
8	24.129	38.583	33.030	20.389	1'56.131	240,5	11:28'02.957
9	24.318	38.546	32.842	20.661	1'56.367	239,5	11:29'59.324
10	24.354	38.288	32.890	20.605	1'56.137	240,0	11:31'55.461
11	24.244	38.060	32.651	20.413	1'55.368	238,9	11:33'50.829
12	24.468	37.892	32.323	20.404	1'55.087	240,0	11:35'45.916

4 S. TAVANO (1'53.273)							
Giro	Seg.1	Seg.2	Seg.3	Seg.4	T. Giro	km/h	Local Time
1							11:09'32.446
2	51.782	42.539	37.310	2'28.988	4'40.619P	117,9	11:14'13.065
3	42.861	42.538	39.012	20.738	2'25.149P	151,9	11:16'38.214
4	24.199	37.785	32.916	20.323	1'55.223	234,8	11:18'33.437
5	23.788	38.186	33.088	20.241	1'55.303	237,4	11:20'28.740
6	24.091	37.361	32.166	20.271	1'53.889	236,3	11:22'22.629
7	25.508	39.255	33.126	2'05.530	3'43.419P	236,8	11:26'06.048
8	42.279	44.422	40.333	20.661	2'27.695P	154,3	11:28'33.743
9	23.823	37.431	47.278	20.450	2'08.982	238,9	11:30'42.725
10	23.889	37.593	32.167	20.128	1'53.777	242,2	11:32'36.502
11	23.894	37.244	32.058	20.077	1'53.273	243,2	11:34'29.775

5 M. BISSA (1'52.949)							
Giro	Seg.1	Seg.2	Seg.3	Seg.4	T. Giro	km/h	Local Time
1		46.477	38.542	22.725		150,6	11:11'44.636
2	25.229	39.812	33.729	20.545	1'59.315	231,8	11:13'43.951
3	24.487	38.231	33.480	20.124	1'56.322	236,3	11:15'40.273
4	23.950	37.929	33.628	20.162	1'55.669C	237,9	11:17'35.942
5	24.097	37.660	32.405	20.056	1'54.218	239,5	11:19'30.160
6	24.050	38.013	32.911	41.446	2'16.420P	238,9	11:21'46.580
7	3'08.436	41.319	38.069	20.387	4'48.211P	139,2	11:26'34.791
8	24.519	37.587	32.910	20.116	1'55.132	236,3	11:28'29.923
9	23.670	38.536	33.757	21.180	1'57.143C	237,9	11:30'27.066
10	23.546		19.980	1'52.949	237,9	11:32'20.015	
11	23.798	37.350	33.957	20.516	1'55.621	239,5	11:34'15.636

6 J. GIACON (1'53.016)							
Giro	Seg.1	Seg.2	Seg.3	Seg.4	T. Giro	km/h	Local Time
1							11:09'21.569
2	49.020	47.015	39.334	22.492	2'37.861P	146,9	11:11'59.430
3	27.965	43.317	37.748	2'28.114	4'17.144P	203,0	11:16'16.574
4	42.189	40.905	34.870	20.454	2'18.418P	164,6	11:18'34.992
5	23.979	38.190	32.590	20.128	1'54.887C	243,8	11:20'29.879
6	23.707	37.535	32.637	20.148	1'54.027	243,8	11:22'23.906
7	23.710	37.803	32.408	20.246	1'54.167	244,9	11:24'18.073
8	23.742	37.533	32.417	20.071	1'53.763		11:26'11.836
9	24.655	38.756	34.249	1'46.311	3'23.971P	243,8	11:29'35.807
10	44.488	42.907	37.844	20.463	2'25.702P	159,1	11:32'01.509
11	23.822	37.225	32.198	20.090	1'53.335	243,2	11:33'54.844
12	23.599	37.079	32.367	19.971	1'53.016	243,8	11:35'47.860

8 D. BABUIN (1'52.922)							
Giro	Seg.1	Seg.2	Seg.3	Seg.4	T. Giro	km/h	Local Time
1							11:09'45.254
2	49.789	44.904	37.322	21.709	2'33.724P	152,8	11:12'18.978

3	25.701	41.621	34.746	21.423	2'03.491	214,3	11:14'22.469
4	26.042	38.681	33.339	20.223	1'58.285	190,8	11:16'20.754
5	23.835	37.876	32.394	19.991	1'54.096	244,9	11:18'14.850
6	23.894	37.677	32.318	19.984	1'53.873	245,5	11:20'08.723
7	24.020	37.773	32.944	2'37.144	4'11.881P	239,5	11:24'20.604
8	42.977	49.569	41.179	21.138	2'34.863P	155,0	11:26'55.467
9	24.738	45.290	39.850	26.449	2'16.327	240,0	11:29'11.794
10	24.379	37.732	32.879	20.092	1'55.082	242,2	11:31'06.876
11	23.604	37.380	32.146	19.921	1'53.051	246,0	11:32'59.927
12	23.640	37.175	32.278	19.829	1'52.922	245,5	11:34'52.849

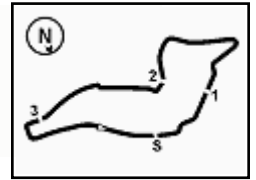
11 D. REDUZZI (1'54.994)							
Giro	Seg.1	Seg.2	Seg.3	Seg.4	T. Giro	km/h	Local Time
1							11:09'30.766
2	48.830	45.933	40.437	22.937	2'38.137P	152,8	11:12'08.903
3	27.039	44.531	39.914	21.867	2'13.351	212,2	11:14'22.254
4	26.377	40.084	34.145	2'56.816	4'37.422P	210,5	11:18'59.676
5	39.693	38.903	41.121	20.821	2'20.538P	163,1	11:21'20.214
6	24.509	39.213	33.704	20.537	1'57.963	234,8	11:23'18.177
7	24.380	38.001	32.866	20.381	1'55.628	237,4	11:25'13.805
8	24.863	38.745	33.303	1'56.453	3'33.364P	234,8	11:28'47.169
9	40.699	40.810	33.914	20.596	2'16.019P	157,7	11:31'03.188
10	24.696	38.020	33.088	20.767	1'56.571	232,3	11:32'59.759
11	24.571	37.728	32.594	20.101	1'54.994	233,3	11:34'54.753

12 G. FERNÁNDEZ (1'53.026)							
Giro	Seg.1	Seg.2	Seg.3	Seg.4	T. Giro	km/h	Local Time
1		43.653	36.991	22.255		138,5	11:11'30.441
2	25.457	40.144	34.171	38.112	2'17.884P	231,8	11:13'48.325
3	2'05.331	39.608	33.568	20.490	3'38.997P	161,4	11:17'27.322
4	24.047	37.714	32.849	20.072	1'54.682	240,0	11:19'22.004
5	24.008	37.386	32.220	19.959	1'53.573	241,6	11:21'15.577
6	23.709	37.774	36.006	39.629	2'17.118P	242,2	11:23'32.695
7	1'56.196	41.814	35.401	20.582	3'33.993P	91,2	11:27'06.688
8	24.146	37.455	42.193	20.975	2'04.769	241,1	11:29'11.457
9	23.895	37.358	40.025	20.977	2'02.255	241,6	11:31'13.712
10	23.576	36.962	32.414	20.074	1'53.026	244,3	11:33'06.738

13 E. ROMANI (1'58.056)							
Giro	Seg.1	Seg.2	Seg.3	Seg.4	T. Giro	km/h	Local Time
1							11:09'11.402
2	53.366	48.200	40.491	23.273	2'45.330P	147,5	11:11'56.732
3	27.617	42.474	36.584	21.414	2'08.089	190,1	11:14'04.821
4	25.985	40.622	34.352	21.067	2'02.026	217,7	11:16'06.847
5	25.766	39.821	34.310	2'46.351	4'26.248P	226,4	11:20'33.095
6	41.807	41.499	34.123	21.019	2'18.448P	164,4	11:22'51.543
7	25.084	39.406	34.009	20.614	1'59.113	225,0	11:24'50.656
8	24.814	39.038	33.539	20.665	1'58.056	229,3	11:26'48.712
9	27.555	41.574	34.090	20.835	2'04.054	226,9	11:28'52.766
10	24.924	39.191	33.663	20.671	1'58.449	233,3	11:30'51.215
11	25.167	39.673	33.872	20.901	1'59.613	218,2	11:32'50.828

14 M. IANNOTTA (1'54.267)							
Giro	Seg.1	Seg.2	Seg.3	Seg.4	T. Giro	km/h	Local Time
1		46.831	38.171	40.839		117,9	11:12'01.861
2	2'07.080	40.843	34.165	21.013	3'43.101P	130,1	11:15'44.962
3	24.682	40.306	33.208	20.836	1'59.032	235,8	11:17'43.994
4	24.369	38.086	32.847	20.379	1'55.681	237,9	11:19'39.675
5	23.925	37.621	32.492	20.344	1'54.382	237,9	11:21'34.057
6	23.955	37.710	32.944	38.820	2'13.429P	237,4	11:23'47.486
7	3'31.517	44.707	34.559	21.016	5'11.799P	148,4	11:28'59.285
8	24.302	38.113	33.665	20.372	1'56.452	237,9	11:30'55.737





9 **23.910** **37.361** 32.634 20.362 **1'54.267** **238,4** 11:32'50.004
 10 23.935 37.479 32.573 20.357 **1'54.344** **238,4** 11:34'44.348

18 S. VENTAJA (1'55.521)

Giro	Seg.1	Seg.2	Seg.3	Seg.4	T. Giro	km/h	Local Time
1							11:09'16.708
2	51.838	50.823	41.559	23.572	2'47.792P	132,8	11:12'04.500
3	29.696	45.748	39.701	22.498	2'17.643	178,8	11:14'22.143
4	28.826	43.046	36.609	2'11.033	3'59.514P	185,6	11:18'21.657
5	49.909	45.737	37.367	22.358	2'35.371P	147,7	11:20'57.028
6	26.659	40.489	35.660	20.728	2'03.536	203,8	11:23'00.564
7	24.670	39.440	33.088	20.589	1'57.787	233,8	11:24'58.351
8	25.270	38.749	33.219	20.525	1'57.763	204,9	11:26'56.114
9	24.630	39.254	35.886	20.915	2'00.685	235,3	11:28'56.799
10	24.437	38.273	32.757	20.386	1'55.853	234,8	11:30'52.652
11	24.305	38.350	32.451	20.470	1'55.576C	233,8	11:32'48.228
12	24.371	38.236	32.638	20.276	1'55.521	237,4	11:34'43.749

19 G. FERNÁNDEZ (1'53.191)

Giro	Seg.1	Seg.2	Seg.3	Seg.4	T. Giro	km/h	Local Time
1							11:11'34.333
2	25.710	40.430	34.514	38.767	2'19.421P	207,7	11:13'53.754
3	3'30.735	42.045	33.638	20.816	5'07.234P	143,4	11:19'00.988
4	24.234	37.766	33.307	20.432	1'55.739	237,9	11:20'56.727
5	24.039	37.521	32.678	20.311	1'54.549	240,0	11:22'51.276
6	24.105	38.356	34.217	36.932	2'13.610P	239,5	11:25'04.886
7	1'54.885	41.332	34.814	20.730	3'31.761P	157,9	11:28'36.647
8	24.088	37.431	32.643	20.398	1'54.560	239,5	11:30'31.207
9	25.157	42.946	34.993	20.931	2'04.027	243,2	11:32'35.234
10	23.913	36.935	32.256	20.087	1'53.191	241,1	11:34'28.425

20 F. RAFFAELE (1'54.714)

Giro	Seg.1	Seg.2	Seg.3	Seg.4	T. Giro	km/h	Local Time
1							11:09'38.513
2	49.369	45.896	39.069	23.143	2'37.477P	135,2	11:12'15.990
3	28.120	41.593	36.386	21.793	2'07.892	204,9	11:14'23.882
4	26.775	39.826	34.905	2'02.777	3'44.283P	216,9	11:18'08.165
5	45.223	40.963	40.482	21.626	2'28.294P	153,4	11:20'36.459
6	24.997	38.972	33.483	20.555	1'58.007	229,8	11:22'34.466
7	24.373	38.164	33.110	20.343	1'55.990	236,3	11:24'30.456
8	24.401	38.234	32.781	20.397	1'55.813	236,3	11:26'26.269
9	24.252	38.147	32.811	20.382	1'55.592	234,8	11:28'21.861
10	24.364	37.890	32.755	20.274	1'55.283	235,8	11:30'17.144
11	24.212	37.795	32.844	20.141	1'54.992	237,4	11:32'12.136
12	24.042	37.856	32.527	20.289	1'54.714	237,4	11:34'06.850

21 N. GUIDA (1'54.423)

Giro	Seg.1	Seg.2	Seg.3	Seg.4	T. Giro	km/h	Local Time
1							11:09'33.668
2	51.157	46.330	39.942	24.198	2'41.627P	119,1	11:12'15.295
3	28.838	44.971	37.065	2'33.944	4'24.818P	198,5	11:16'40.113
4	43.973	45.246	37.714	21.957	2'28.890P	165,9	11:19'09.003
5	26.366	40.993	34.023	21.470	2'02.852	235,3	11:21'11.855
6	25.247	39.792	37.885	20.937	2'03.861	237,9	11:23'15.716
7	24.719	41.046	34.982	21.044	2'01.791	239,5	11:25'17.507
8	24.848	39.782	33.245	20.754	1'58.629	241,6	11:27'16.136
9	24.491	38.705	33.128	20.771	1'57.095	238,9	11:29'13.231
10	24.594	38.599	32.735	20.523	1'56.451	241,1	11:31'09.882
11	24.315	38.369	32.422	20.362	1'55.468	241,6	11:33'05.150
12	24.066	37.937	32.146	20.274	1'54.423	240,5	11:34'59.573

22 N. LANGEVELD (1'52.546)

Giro	Seg.1	Seg.2	Seg.3	Seg.4	T. Giro	km/h	Local Time
1							11:09'36.356
2	47.939	41.572	37.481	23.244	2'30.236P	134,5	11:12'06.592
3	26.021	38.484	34.309	20.392	1'59.206	210,9	11:14'05.798
4	24.863	37.643	32.973	20.215	1'55.694	239,5	11:16'01.492
5	24.109	37.292	32.220	1'28.151	3'01.772P	238,9	11:19'03.264
6	40.728	39.927	33.924	20.265	2'14.844P	158,8	11:21'18.108
7	23.974	37.090	32.942	20.099	1'54.105	239,5	11:23'12.213
8	23.672	36.893	32.133	20.082	1'52.780	237,4	11:25'04.993
9	23.684	36.979	32.239	1'33.433	3'06.335P	238,4	11:28'11.328
10	41.003	40.623	35.239	21.633	2'18.498P	159,8	11:30'29.826
11	23.885	37.175	32.825	19.988	1'53.873	240,5	11:32'23.699
12	23.775	36.719	32.066	19.986	1'52.546	238,9	11:34'16.245

23 M. VAHTEL (1'53.333)

Giro	Seg.1	Seg.2	Seg.3	Seg.4	T. Giro	km/h	Local Time
1							11:09'27.741
2	46.750	45.976	37.514	21.980	2'32.220P	154,1	11:11'59.961
3	26.483	40.678	34.998	20.914	2'03.073	218,2	11:14'03.034
4	24.631	38.239	33.369	20.476	1'56.715	233,8	11:15'59.749
5	23.956	37.145	32.674	20.139	1'53.914	235,8	11:17'53.663
6	23.759	37.047	32.513	20.119	1'53.438	237,9	11:19'47.101
7	23.610	36.979	32.458	20.286	1'53.333	236,8	11:21'40.434
8	23.554	37.091	32.384	20.239	1'53.268C	236,8	11:23'33.702
9	23.579	37.383	32.688	2'19.408	3'53.058P	237,9	11:27'26.760
10	47.452	40.671	33.625	20.288	2'22.036P	134,2	11:29'48.796
11	23.955	37.468	33.686	21.026	1'56.135	235,8	11:31'44.931

24 L. LORENZINI (1'54.298)

Giro	Seg.1	Seg.2	Seg.3	Seg.4	T. Giro	km/h	Local Time
1							11:09'43.652
2	49.923	44.726	38.172	2'46.530	4'59.351P	152,8	11:14'43.003
3	42.418	42.617	38.919	21.133	2'25.087P	154,1	11:17'08.090
4	24.468	38.066	33.332	20.251	1'56.117	236,3	11:19'04.207
5	24.191	39.245	33.757	22.666	1'59.859	240,0	11:21'04.066
6	24.216	37.549	32.883	20.200	1'54.848	239,5	11:22'58.914
7	23.850	37.089	33.152	20.207	1'54.298	238,9	11:24'53.212
8	24.273	38.070	34.231	1'53.562	3'30.136P	238,9	11:28'23.348
9	44.306	41.710	35.530	21.511	2'23.057P	155,0	11:30'46.405
10	24.128	37.397	32.968	20.178	1'54.671	240,0	11:32'41.076
11	24.217	37.357	32.591	20.166	1'54.331	238,4	11:34'35.407

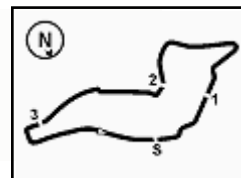
27 V. RUBEN (1'52.353)

Giro	Seg.1	Seg.2	Seg.3	Seg.4	T. Giro	km/h	Local Time
1							11:09'25.944
2	46.998	44.472	36.109	21.526	2'29.105P	155,8	11:11'55.049
3	24.778	38.591	33.431	20.634	1'57.434	231,8	11:13'52.483
4	24.006	37.840	32.960	20.333	1'55.139	235,8	11:15'47.622
5	23.732	37.550	32.587	20.264	1'54.133	238,4	11:17'41.755
6	23.709	37.405	32.355	20.120	1'53.589	238,9	11:19'35.344
7	23.427	37.025	32.193	20.127	1'52.772	238,9	11:21'28.116
8	24.111	37.196	32.282	20.087	1'53.676	239,5	11:23'21.792
9	23.432	36.811	32.550	20.124	1'52.917	238,9	11:25'14.709
10	23.838	37.087	32.238	1'47.887	3'21.050P	239,5	11:28'35.759
11	46.994	43.844	33.328	20.709	2'24.875P	137,6	11:31'00.634
12	23.691	36.781	31.904	19.977	1'52.353	238,4	11:32'52.987

33 C. TAMBURINI (1'52.573)

Giro	Seg.1	Seg.2	Seg.3	Seg.4	T. Giro	km/h	Local Time
1							11:11'41.231
2	26.364	39.330	34.736	38.146	2'18.576P	208,1	11:13'59.807





Imola Circuit 4.909 m

3 / 4
ACI Racing Weekend Imola, 7-8 Maggio 2022
TCR Italy - Analisi Tempi Qualifiche

3	1'59.391	48.815	39.985	20.215	3'48.406P	129,2	11:17'48.213	8	23.988	37.876	32.466	2'02.493	3'36.823P	236,8	11:28'10.328
4	23.804	37.481	32.500	20.335	1'54.120	236,8	11:19'42.333	9	42.243	41.048	35.587	2'17.555	2'20.633P	121,5	11:30'30.961
5	23.677	38.738	32.954	20.061	1'55.430	238,9	11:21'37.763	10	24.156	37.457	32.321	20.032	1'53.966	237,4	11:32'24.927
6	23.628	37.140	32.276	20.182	1'53.226	238,4	11:23'30.989	11	24.047	37.256	32.565	20.163	1'54.031	237,4	11:34'18.958
7	23.433	36.909	32.097	20.134	1'52.573	238,9	11:25'23.562								
8	24.073	37.131	32.482	36.784	2'10.470P	239,5	11:27'34.032								
9	2'21.545	43.616	35.558	20.175	4'00.894P	96,8	11:31'34.926								
10	23.886	38.579	33.657	19.946	1'56.068	236,3	11:33'30.994								
11	23.748	36.840	32.247	20.312	1'53.147	236,8	11:35'24.141								

37 S. LOPÉZ BOLOTIN (1'53.796)

Giro	Seg.1	Seg.2	Seg.3	Seg.4	T. Giro	km/h	Local Time
1		43.733	36.661	22.254		153,0	11:11'31.891
2	25.997	39.935	34.094	38.396	2'18.422P	216,4	11:13'50.313
3	2'05.294	39.833	33.693	20.934	3'39.754P	165,6	11:17'30.067
4	24.441	38.449	33.169	20.430	1'56.489	237,4	11:19'26.556
5	24.016	37.798	32.871	20.207	1'54.892	237,9	11:21'21.448
6	23.796	37.739	33.111	20.564	1'55.210C	241,1	11:23'16.658
7	24.224	38.317	32.829	36.166	2'11.536P	240,5	11:25'28.194
8	1'40.788	39.657	33.492	20.531	3'14.468P	157,0	11:28'42.662
9	23.917	38.074	32.593	20.166	1'54.750	239,5	11:30'37.412
10	23.706	37.358	32.613	20.119	1'53.796	240,5	11:32'31.208
11	23.978	37.936	32.756	20.135	1'54.805	241,1	11:34'26.013

39 R. ANTTI (1'53.147)

Giro	Seg.1	Seg.2	Seg.3	Seg.4	T. Giro	km/h	Local Time
1							11:09'29.484
2	47.382	46.692	40.702	1'37.995	3'52.771P	136,9	11:13'22.255
3	41.106	41.574	36.482	20.582	2'19.744P	162,4	11:15'41.999
4	24.830	38.276	32.946	20.221	1'56.273	236,8	11:17'38.272
5	24.062	37.694	32.794	20.267	1'54.817	238,9	11:19'33.089
6	23.657	37.578	32.657	20.193	1'54.085	240,0	11:21'27.174
7	25.234	38.819	33.449	2'11.702	3'49.204P	238,9	11:25'16.378
8	41.732	40.364	33.358	20.415	2'15.869P	154,3	11:27'32.247
9	23.862	37.426	32.547	20.111	1'53.946C	235,8	11:29'26.193
10	25.621	38.410	33.021	20.252	1'57.304	226,9	11:31'23.497
11	23.869	37.372	32.451	20.145	1'53.837	236,8	11:33'17.334
12	23.673	37.286	32.134	20.054	1'53.147	237,9	11:35'10.481

44 M. IMBERTI (1'53.017)

Giro	Seg.1	Seg.2	Seg.3	Seg.4	T. Giro	km/h	Local Time
1							11:09'23.524
2	48.880	47.711	41.348	2'20.266	4'38.205P	142,5	11:14'01.729
3	41.144	39.689	34.071	20.656	2'15.560P	159,5	11:16'17.289
4	24.499	38.016	32.878	20.557	1'55.950C	233,3	11:18'13.239
5	24.483	37.667	32.357	20.303	1'54.810	233,8	11:20'08.049
6	26.506	38.244	33.123	20.735	1'58.608	180,6	11:22'06.657
7	24.297	37.393	32.286	20.177	1'54.153C	233,3	11:24'00.810
8	24.041	37.560	32.469	1'33.927	3'07.997P	233,8	11:27'08.807
9	40.328	42.168	38.372	20.879	2'21.747P	160,2	11:29'30.554
10	24.410	38.117	32.351	20.048	1'54.926	234,3	11:31'25.480
11	23.934	37.362	32.068	19.963	1'53.327	237,4	11:33'18.807
12	23.894	36.997	32.157	19.969	1'53.017	237,9	11:35'11.824

46 M. BUTTI (1'53.966)

Giro	Seg.1	Seg.2	Seg.3	Seg.4	T. Giro	km/h	Local Time
1							11:09'14.918
2	49.382	43.189	38.574	23.181	2'34.326P	154,5	11:11'49.244
3	25.540	42.188	33.872	2'53.930	4'35.530P	218,6	11:16'24.774
4	39.141	37.973	35.986	23.426	2'16.526P	163,9	11:18'41.300
5	25.376	41.101	35.808	20.678	2'02.963	235,8	11:20'44.263
6	24.335	37.636	32.713	20.461	1'55.145	234,3	11:22'39.408
7	24.033	37.609	32.194	20.261	1'54.097	235,8	11:24'33.505

07/05/2022

P = Box In/Out - C = Tempo Invalidato

47 E. CARMINATI (1'55.029)

Giro	Seg.1	Seg.2	Seg.3	Seg.4	T. Giro	km/h	Local Time
1							11:09'25.057
2	48.446	48.100	40.587	2'33.418	4'50.551P	144,0	11:14'15.608
3	42.389	42.945	38.290	21.157	2'24.781P	162,2	11:16'40.389
4	24.959	39.257	33.789	20.818	1'58.823	236,8	11:18'39.212
5	25.636	38.846	34.132	20.874	1'59.488	235,8	11:20'38.700
6	24.528	38.515	32.966	20.513	1'56.522	238,9	11:22'35.222
7	24.391	38.372	32.985	20.412	1'56.160	237,4	11:24'31.382
8	24.668	38.828	34.244	2'41.612	4'19.352P	234,8	11:28'50.734
9	42.197	45.153	35.694	21.238	2'24.282P	159,5	11:31'15.016
10	24.879	38.646	32.889	20.651	1'57.065	233,8	11:33'12.081
11	24.236	37.808	32.628	20.357	1'55.029	237,9	11:35'07.110

56 C. BRUSA (1'55.790)

Giro	Seg.1	Seg.2	Seg.3	Seg.4	T. Giro	km/h	Local Time
1							11:09'39.552
2	46.208	46.087	39.974	22.793	2'35.062P	151,7	11:12'14.614
3	25.584	42.089	38.483	2'33.277	4'19.433P	227,4	11:16'34.047
4	42.054	41.909	34.137	20.996	2'19.096P	141,2	11:18'53.143
5	24.370	38.306	33.497	20.617	1'56.790	231,3	11:20'49.933
6	24.496	38.124	32.888	20.526	1'56.034	232,8	11:22'45.967
7	24.249	37.949	32.857	20.735	1'55.790	232,8	11:24'41.757
8	24.331	38.661	32.740	1'44.089	3'19.821P	232,3	11:28'01.578
9	40.982	42.145	33.711	21.793	2'18.631P	157,4	11:30'20.209
10	24.328	38.246	33.295	20.517	1'56.386	233,8	11:32'16.595
11	24.447	38.217	32.836	20.569	1'56.069	233,8	11:34'12.664

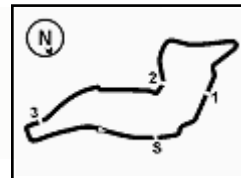
61 G. GHERMANDI (1'53.948)

Giro	Seg.1	Seg.2	Seg.3	Seg.4	T. Giro	km/h	Local Time
1		43.280	40.041	23.998		158,4	11:11'40.458
2	25.864	39.409	34.140	20.649	2'00.062	220,9	11:13'40.520
3	25.148	38.627	32.764	20.315	1'56.854	233,8	11:15'37.374
4	24.640	38.439	32.739	20.274	1'56.092	232,8	11:17'33.466
5	23.947	37.698	32.238	20.154	1'54.037	236,8	11:19'27.503
6	24.235	37.709	33.350	2'27.930	4'03.224P	233,3	11:23'30.727
7	43.059	40.987	35.967	20.894	2'20.907P	153,8	11:25'51.634
8	24.476	38.543	33.151	20.344	1'56.514	231,8	11:27'48.148
9	24.041	37.612	32.170	20.125	1'53.948	233,3	11:29'42.096
10	23.924	40.993	34.180	20.418	1'59.515	236,3	11:31'41.611
11	24.284	37.854	36.790	20.488	1'59.416	237,4	11:33'41.027
12	24.080	37.347	32.281	20.352	1'54.060		11:35'35.087

66 G. COLOMBANI (1'54.978)

Giro	Seg.1	Seg.2	Seg.3	Seg.4	T. Giro	km/h	Local Time
1							11:09'18.591
2	50.308	46.703	39.087	22.703	2'38.801P	145,2	11:11'57.392
3	27.837	43.816	38.645	23.389	2'13.687	181,5	11:14'11.079
4	25.828	40.283	35.106	2'20.125	4'01.342P	214,7	11:18'12.421
5	41.842	41.968	35.494	21.124	2'20.428P	160,7	11:20'32.849
6	24.637	38.552	33.114	20.671	1'56.974	232,8	11:22'29.823
7	24.216	38.649	33.224	20.605	1'56.694	240,0	11:24'26.517
8	24.443	38.374	33.332	20.841	1'56.990	228,3	11:26'23.507
9	24.183	38.348	32.995	20.534	1'56.060	241,1	11:28'19.567
10	24.069	38.060	33.036	20.548	1'55.713	241,6	11:30'15.280
11	23.846	38.061	32.610	20.461	1'54.978	241,6	11:32'10.258
12	23.864	38.235	32.866	20.505	1'55.470	240,5	11:34'05.728





Imola Circuit 4.909 m

4 / 4

ACI Racing Weekend Imola, 7-8 Maggio 2022

TCR Italy - Analisi Tempi Qualifiche

74 E. CAPPELLO (1'56.421)

Giro	Seg.1	Seg.2	Seg.3	Seg.4	T. Giro	km/h	Local Time
1							11:09'46.696
2	52.914	49.547	44.909	23.537	2'50.907P	119,2	11:12'37.603
3	28.914	49.913	37.160	21.942	2'17.929	196,0	11:14'55.532
4	25.590	39.685	34.005	21.003	2'00.283	222,7	11:16'55.815
5	27.578	41.860	39.925	2'01.793	3'51.156P	228,3	11:20'46.971
6	45.798	48.708	43.721	21.655	2'39.882P	128,9	11:23'26.853
7	24.988	41.487	35.390	20.877	2'02.742	230,8	11:25'29.595
8	24.646	38.989	33.215	20.523	1'57.373	232,8	11:27'26.968
9	24.271	38.009	33.674	20.467	1'56.421	233,3	11:29'23.389
10	24.512	38.145	32.942	1'36.847	3'12.446P	234,3	11:32'35.835

8	25.114	38.958	33.857	20.892	1'58.821	229,8	11:28'51.619
9	24.515	38.682	33.542	20.589	1'57.328	227,4	11:30'48.947
10	24.380	38.370	33.258	20.632	1'56.640	231,8	11:32'45.587
11	24.516	38.389	33.116	20.662	1'56.683	227,8	11:34'42.270

96 S. GIACON (1'56.292)

Giro	Seg.1	Seg.2	Seg.3	Seg.4	T. Giro	km/h	Local Time
1							11:09'20.285
2	50.140	52.097	40.333	23.315	2'45.885P	144,0	11:12'06.170
3	28.364	45.144	36.704	2'16.735	4'06.947P	195,3	11:16'13.117
4	42.135	41.612	36.846	21.251	2'21.844P	156,3	11:18'34.961
5	25.408	38.898	33.914	20.716	1'58.936C	229,8	11:20'33.897
6	24.559	38.460	33.556	20.455	1'57.030	238,9	11:22'30.927
7	24.423	38.312	33.600	20.395	1'56.730	240,5	11:24'27.657
8	24.382	38.174	33.319	2'01.354	3'37.229P	238,9	11:28'04.886
9	41.656	41.310	37.758	23.652	2'24.376P	156,5	11:30'29.262
10	24.387	38.499	33.793	20.415	1'57.094		11:32'26.356
11	24.196			21.067	1'56.292	241,1	11:34'22.648

77 S. PUSSIER (1'53.938)

Giro	Seg.1	Seg.2	Seg.3	Seg.4	T. Giro	km/h	Local Time
1							11:09'48.264
2	50.722	45.212	37.758	22.322	2'36.014P	128,3	11:12'24.278
3	27.603	41.242	35.879	2'27.656	4'12.380P	181,5	11:16'36.658
4	42.625	40.976	34.334	20.990	2'18.925P	155,6	11:18'55.583
5	24.651	38.361	33.411	20.652	1'57.075	236,8	11:20'52.658
6	24.401	37.971	33.271	20.435	1'56.078	240,5	11:22'48.736
7	24.197	37.721	32.895	20.538	1'55.351	241,1	11:24'44.087
8	24.111	37.578	32.630	20.472	1'54.791	241,1	11:26'38.878
9	23.909	40.418	36.537	21.162	2'02.026	240,5	11:28'40.904
10	23.929	37.558	32.907	20.309	1'54.703	241,1	11:30'35.607
11	23.713	37.351	32.595	20.279	1'53.938	242,2	11:32'29.545
12	24.068	37.384	32.537	20.350	1'54.339	241,1	11:34'23.884

81 S. DI MARE (1'55.198)

Giro	Seg.1	Seg.2	Seg.3	Seg.4	T. Giro	km/h	Local Time
1							11:09'35.066
2	50.152	45.325	36.537	22.220	2'34.234P	115,4	11:12'09.300
3	25.644	41.670	33.791	21.126	2'02.231	223,6	11:14'11.531
4	25.226	38.642	34.573	20.730	1'59.171	235,8	11:16'10.702
5	24.252	38.297	33.456	20.727	1'56.732	237,9	11:18'07.434
6	24.217	38.092	33.178	20.379	1'55.866	235,8	11:20'03.300
7	24.171	37.997	32.975	20.398	1'55.541	235,3	11:21'58.841
8	25.467	40.504	36.950	2'01.708	3'44.629P	227,8	11:25'43.470
9	44.368	44.280	38.391	21.451	2'28.490P	79,6	11:28'11.960
10	25.094	39.030	33.537	20.358	1'58.019	231,3	11:30'09.979
11	23.955	37.790	33.096	20.357	1'55.198	237,4	11:32'05.177

85 R. MASSARO

Giro	Seg.1	Seg.2	Seg.3	Seg.4	T. Giro	km/h	Local Time
1							11:09'06.427
2	54.678	45.775	36.345	1'08.706	3'25.504CP	133,8	11:12'31.931
3	41.180	40.209	34.436	21.197	2'17.022CP	151,7	11:14'48.953
4	25.151	39.036	33.937	21.240	1'59.364C	230,3	11:16'48.317
5	24.661	38.368	33.065	20.822	1'56.916C	235,8	11:18'45.233
6	25.378	39.901	34.522	3'12.801	4'52.602CP	233,3	11:23'37.835
7	42.515	44.953	34.086	20.800	2'22.354CP	154,7	11:26'00.189

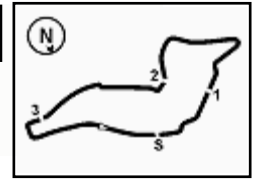
90 M. TRENTIN (1'56.640)

Giro	Seg.1	Seg.2	Seg.3	Seg.4	T. Giro	km/h	Local Time
1							11:09'05.644
2	54.862	49.010	38.905	22.942	2'45.719P	136,0	11:11'51.363
3	26.295	42.835	34.697	21.484	2'05.311	211,8	11:13'56.674
4	24.836	38.612	33.586	20.662	1'57.696		11:15'54.370
5	24.509	38.575	33.745	20.487	1'57.316	227,8	11:17'51.686
6	24.574	40.547	34.129	4'55.459	6'34.709P	228,8	11:24'26.395
7	42.566	42.019	40.555	21.263	2'26.403P	156,1	11:26'52.798

07/05/2022

P = Box In/Out - C = Tempo Invalidato





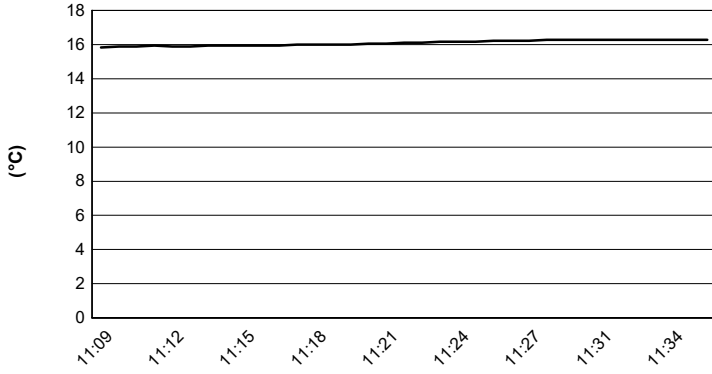
Imola Circuit 4.909 m

ACI Racing Weekend Imola, 7-8 Maggio 2022

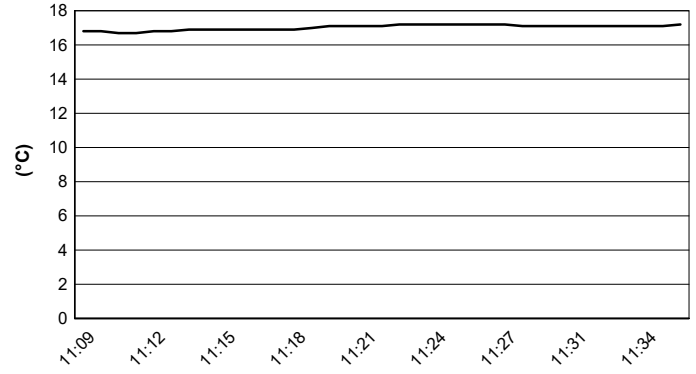
TCR Italy - Meteo Qualifiche

Session started 11:09 - Session ended 11:36

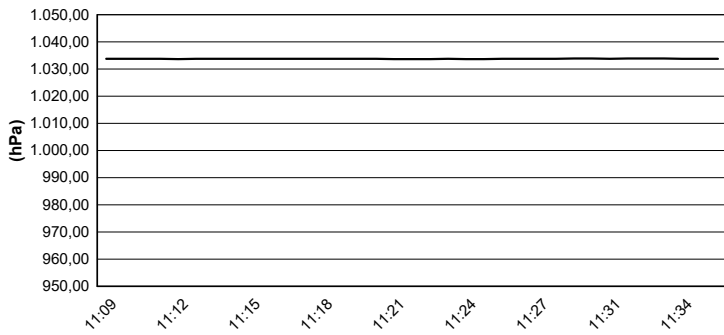
Air Temperature



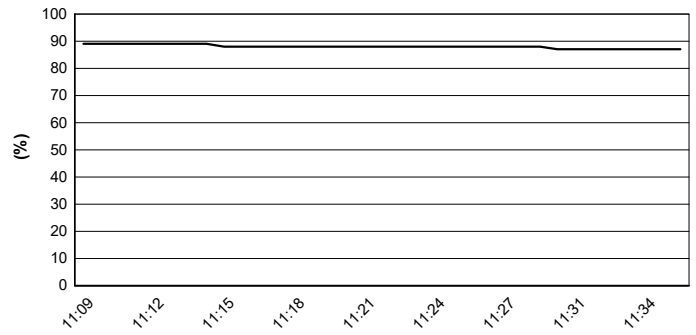
Track Temperature



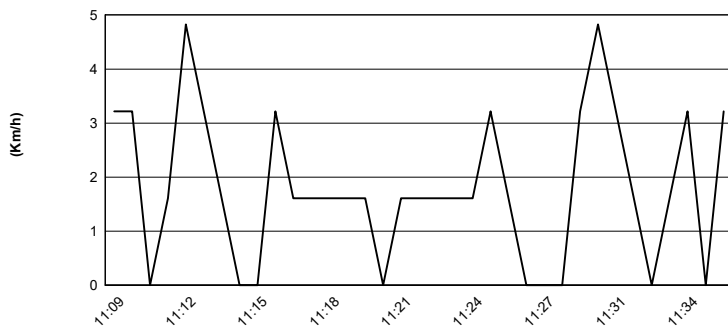
Air Pressure



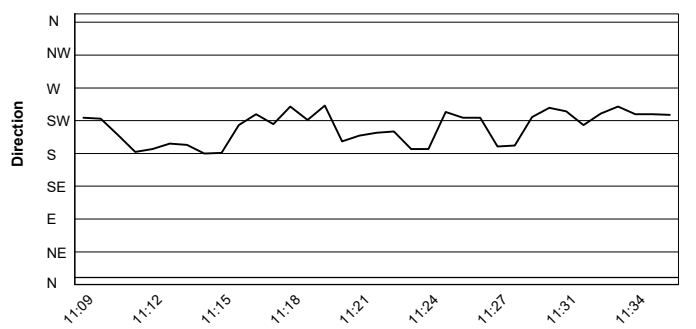
Humidity



Wind Speed



Wind Direction



07/05/2022

